

# Aberdeen Actively Hedged International Equities

## Fact Sheet

December 2011



## Fund Overview

Product Name	BT Investment Funds
APIR	WFS0090AU
Inception Date	March 2003
Fund Status	Open
Distribution Frequency	Annually
Fund Size	\$14.51 million
ICR (Management Fee)	2.15% As at 30/06/2011
Initial Fee	4.00%
Asset Class	International Shares
Recommended Investment Timeframe	5 years +
Risk Category	Aggressive

Latest unit prices (entry/exit) information is available at [www.bt.com.au](http://www.bt.com.au)

## Fund Management

The Fund is managed by Aberdeen Investment Management Australia Limited.

## Investment Objective

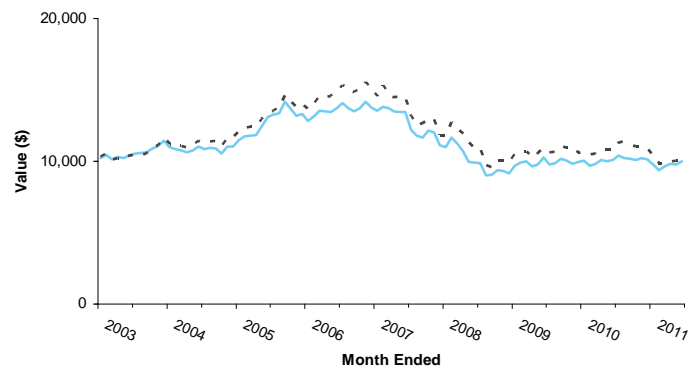
The fund aims to provide investors with high capital growth over the medium to long term by seeking exposure to companies listed on securities exchanges around the world.

## Investment Strategy

The investment strategy of the Fund is to utilise Aberdeen's proven investment philosophy and approach to invest primarily in a concentrated portfolio of global listed securities that have the potential for capital growth and increased earning potential.

## Investment Performance

**Growth of \$10,000 invested  
Since inception (net of ongoing fees)**



— Aberdeen Actively Hedged International Equities - - - - Benchmark

Performance (%) (as at 31/12/2011)	3 months	1 year (pa)	3 years (pa)	5 years (pa)	Since Incep.(pa)
Income Return	0.00	0.72	0.92	1.12	1.32
Growth Return	3.44	-1.93	-0.62	-7.27	-1.34
Total Return	3.44	-1.22	0.30	-6.15	-0.02
Benchmark Return	1.60	-7.24	-2.67	-7.58	0.05

Performance returns are calculated net of ICR (Management Fees) and pre tax.  
Past performance is not a reliable indicator of future performance, the value of your investment can go up and down.

## Asset Allocation

Strategic Asset Allocation	Ranges
International shares	80-100
Cash and other	0-20

The market exposure (asset allocation) and holdings of the fund may change significantly each day.

## Other Features

Make an initial investment of \$5,000 or \$2,000 if you set up a Regular Investment Plan. No minimum investment required per Fund.

To invest with BT, ensure you have read the relevant Product Disclosure Statement (PDS) for this fund and then complete a BT Online Application Form. Alternatively, you can request a PDS and application form from our website or call the BT Contact Centre.

BT Margin Lending will loan against this Fund via a BT Margin Loan. The Loan to Value Ratio (LVR) for this Fund is 75%. Lending ratios are subject to change without notice.



### More information?

→ Speak to your financial adviser → Visit [www.bt.com.au](http://www.bt.com.au) → BT Contact Centre 132 135

BT Funds Management Limited ABN 63 002 916 458, AFSL 233724, BT Funds Management No. 2 Limited ABN 22 000 727 659, AFSL 233720 and Westpac Financial Services Limited ABN 20 000 241 127, AFSL 233716 are the Responsible Entities of the BT Investment Funds Product Disclosure Statement (PDS). Westpac Financial Services Limited ABN 20 000 241 127, AFSL 233716 is the issuer of units in, the Aberdeen Actively Hedged International Equities (the Fund). A PDS and Financial Services Guide (FSG) is available for the Fund and can be obtained by calling the BT Contact Centre on 132 135, or visiting [www.bt.com.au](http://www.bt.com.au). You should obtain and consider the PDS before deciding whether to acquire, continue to hold or dispose of units in the Fund. The information in this flyer is factual only. It does not constitute financial product advice. Before acting on this information you should seek independent financial and taxation advice to determine its appropriateness to your objectives, financial situation and needs. This flyer provides an overview or summary only and it should not be considered a comprehensive statement on any matter or relied upon as such.

Performance figures are calculated in accordance with the Investment and Financial Services Association (IFSA) standards. Total returns are calculated to the last day of each month (unless otherwise indicated) using exit prices and assuming reinvestment of distributions (which may include net realised capital gains from the sale of fund assets). No allowance is made for tax paid as an investor, other than withholding tax on foreign investments (if any).